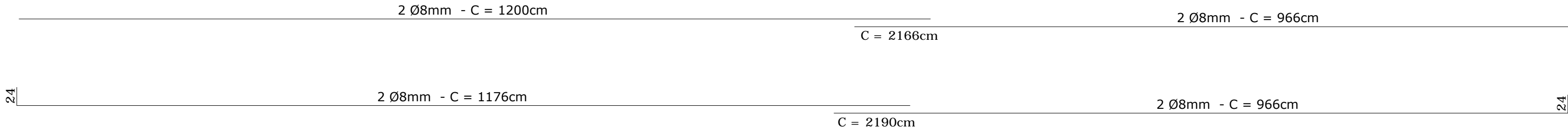
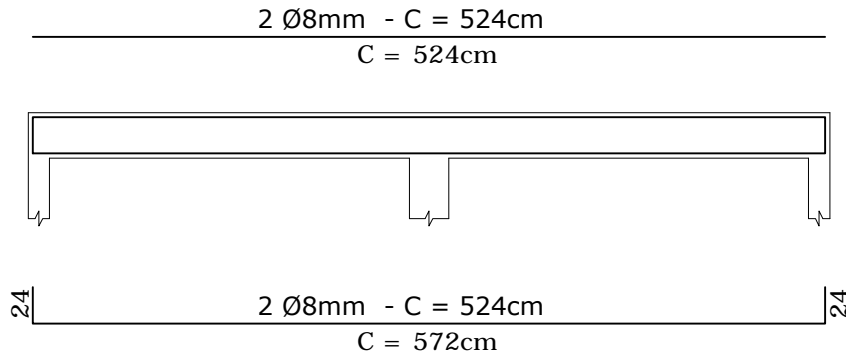


PLANTA FUNDAÇÃO - ESTACAS, BLOCOS E BALDRAMES
ESCALA 1:50

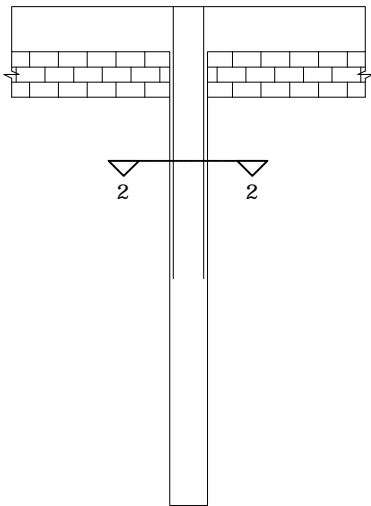


ESQUEMA VIGAS BALDRAME VB-1, VB-2
ESCALA 1:50

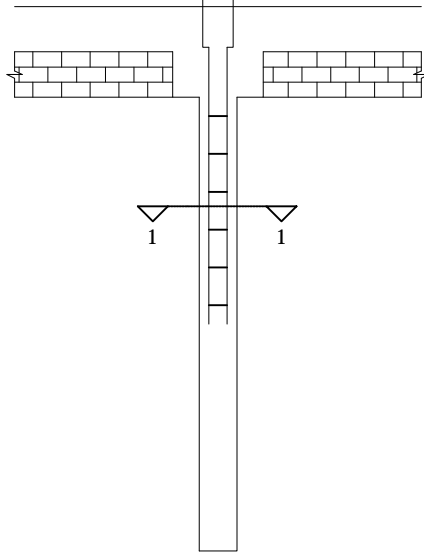


ESQUEMA VIGAS BALDRAME VB-3, VB-4, VB-5
ESCALA 1:50

4 Ø 8 mm - C=180



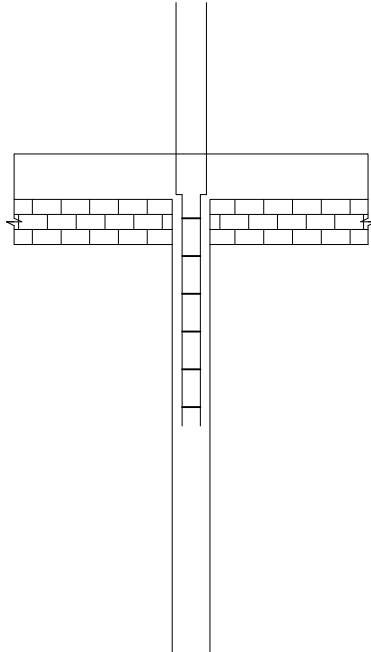
Corte longitudinal estaca Ø 25 mm
ESTACA SEM PILAR



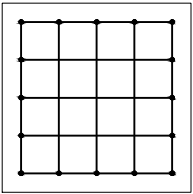
Corte longitudinal estaca Ø 25 mm
ESTACA COM BLOCO E PILAR

4 Ø 10 mm - C=315

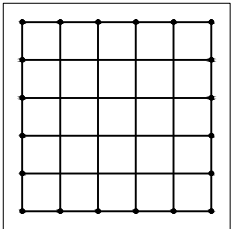
4 Ø 10 mm - C=285



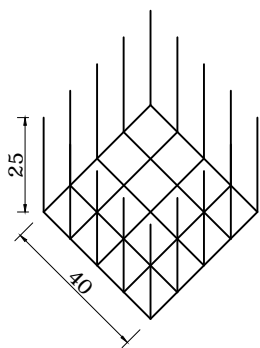
Corte longitudinal estaca Ø 25 mm
ESTACA COM PILAR



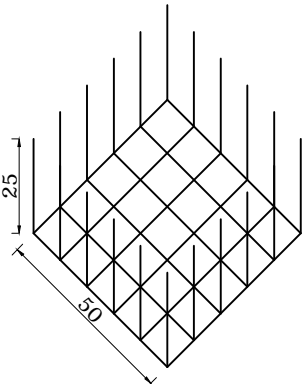
BLOCO 50X50 EM PLANTA
ESCALA 1:20



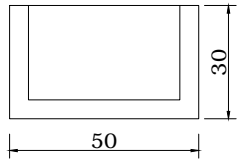
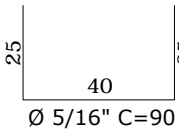
BLOCO 60X60 EM PLANTA
ESCALA 1:20



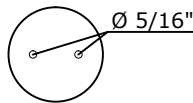
DETALHE DA ARMADURA
ESCALA 1:20



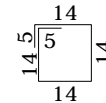
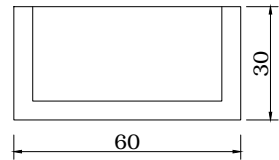
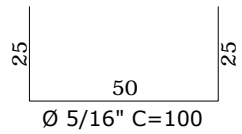
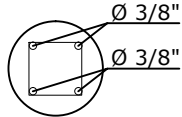
DETALHE DA ARMADURA
ESCALA 1:20



SEÇÃO 2-2 Ø25
ESTACA SEM PILAR
ESCALA 1:20

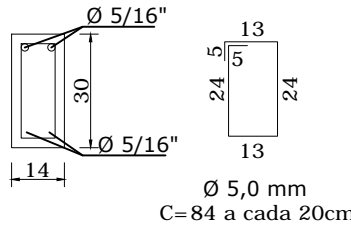


SEÇÃO 1-1 Ø25
ESTACA COM PILAR
ESCALA 1:20



Ø 5,0mm - C=66
S = 25 cm

SEÇÃO VIGA BALDRAME
ESCALA 1:20



REFORMA E AMPLIAÇÃO DA ESCOLA VEREADOR ANTÔNIO BORKOSKI

01/02

PLANTA FUNDAÇÃO
DETALHE BLOCOS
DETALHE ESTACAS
DETALHE BALDRAME

PROPRIETÁRIO:

Prefeitura Municipal de Contenda - PR
Prefeito Carlos Eugênio Stabach

AUTOR DO PROJETO:

Eng. Civil Ovídio Luiz Druszc
CREA-PR 19.236/D

RESPONSÁVEL TÉCNICO:

Eng. Civil Ovídio Luiz Druszc
CREA-PR 19.236/D

D A T A
SETEMBRO/2020

DESENHO
DAIANA PRISCILA
ESCOLA

End.: Av. João Franco n.º 400
Centro - Contenda/PR
telefones= (041) 3825 1212 ; 99171268